

# HIGH LINE CUBICLES

BESPOKE OPTIONS  
AVAILABLE



CUBICLES DESIGNED TO  
COPE WITH THE RIGOROUS  
DEMANDS OF BOTH DRY  
AND WET AREAS



# SPECIFICATION

## *Sizes*

Cubicle size floor to ceiling is 2300mm high providing total privacy. Floor to door 1950mm high.

Inside of the cubicle sizes 1500mm depth x 900mm width. Suitable for toilet cubicles.

## *Material*

Solid grade laminate used for all cubicle panels 10/12 mm thick. All exposed edges smoothed and radiused. Headrail material is from rounded extruded aluminium. Ceiling clearance of 20mm.

Aluminium 'U' brackets with tamper-proof fixing are used for securing panels to each other and walls.

## *Door*

Fixed latch with circular faceplate and emergency release facility as standard. Door mounted latches are available as an option. The door width is 600mm.

Each door is front flushed fitted with 2 heavy-duty hinges, incorporating an anti-finger trap and anti-lift design. Hinges can be adjusted to keep the door open, closed or ajar when not in use.

## *Floating Foot*

The floating foot is placed 150mm from the lower hinge with 20mm floor clearance.

The floor must be flat and parallel to the ceiling. Limited adjustment in feet.

## *Accessories*

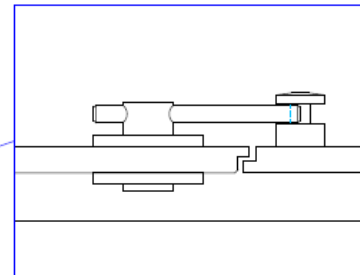
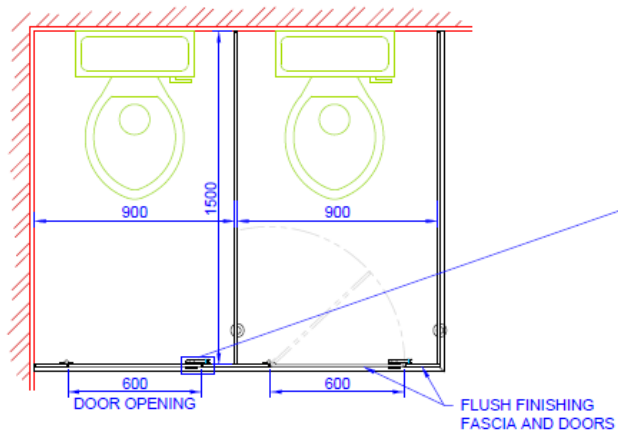
Modesty panels, special fittings for disabled and family usage, baby change, wall panels etc.

## *Colours*

Available to view on request for both doors and frames.

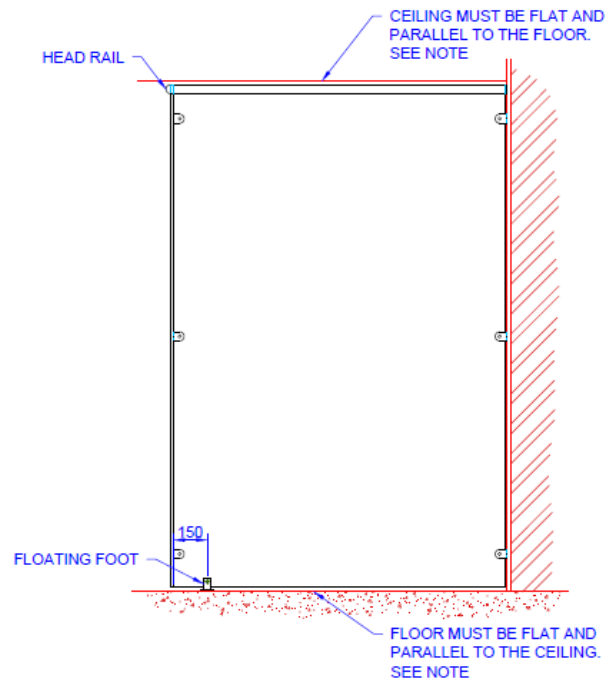
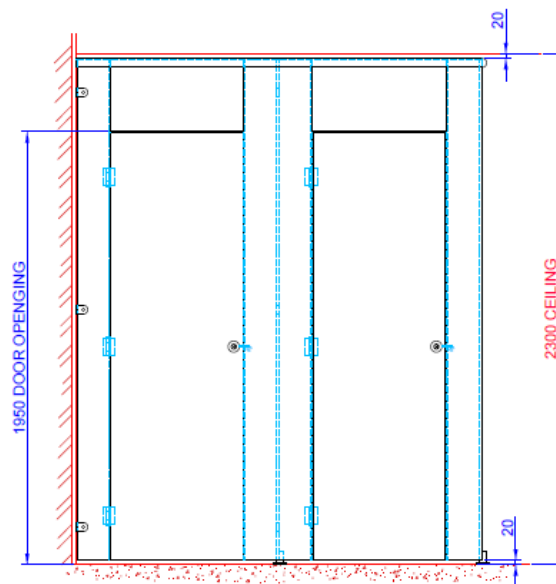


**STORAGE SYSTEMS**



SCALE 1:2  
LOCK VIEW SHOWING DOOR  
AND FASCIA OVERLAP

IMPORTANT:  
THE FLOOR AND CEILING MUST BE FLAT AND  
PARALLEL. THERE IS ONLY LIMITED ADJUSTMENT IN  
THE FEET, SO ANY UNEVENNESS IN THE FLOOR WILL  
CAUSE THE PANELS NOT TO SIT CORRECT.



01	INITIAL ISSUE	22.09.21	PJH
ISSUE	CHANGE NOTE / DESCRIPTION	DATE	BY
DRAWING / PART NUMBER TECH-CB-1002			
TITLE / DESCRIPTION EXAMPLE OF A FLOOR TO CEILING CUBICLE.			
CUSTOMER N.A.			
CUSTOMER PROJECT N.A.			
DRAWN BY:	PJH	DATE:	22.09.2021
CHECKED BY:	PJH	DATE:	22.09.2021
SCALE:	1:20	SHEET	1 OF 1