

# Shelving & Cabinets







# Sysco<sup>®</sup> products

Static shelving is a fine example of versatile archiving. Storage rooms, art storage, libraries, offices, Sysco<sup>®</sup> shelving is our storage chameleon.

In all its simplicity, Sysco<sup>®</sup> shelving is a high quality system. The steel uprights are designed in such a way that no extra finishing is required. Sysco shelving can be supplied in several colours, and in different styles: plain, or perforated with round or slotted holes.

Looking for a more high-end solution? Our Sysco<sup>®</sup> shelving can be configured with cladding on all sides, various accessories and doors, creating a truly personal storage solution.

Our static shelving products are widely used around the globe, amongst world players as well as local businesses, but why do these companies choose for Bruynzeel? Simple, because we exceed our clients expectations both in service and high quality solutions.



## Closed shelving

Sysco® uprights and shelves create a rigid shelving system. Available in a multitude of sizes and with individually configurable compartments a bespoke shelving system can easily be created. Whether you need one or multiple sections, Sysco® shelving has a solution.



## Perforated shelving

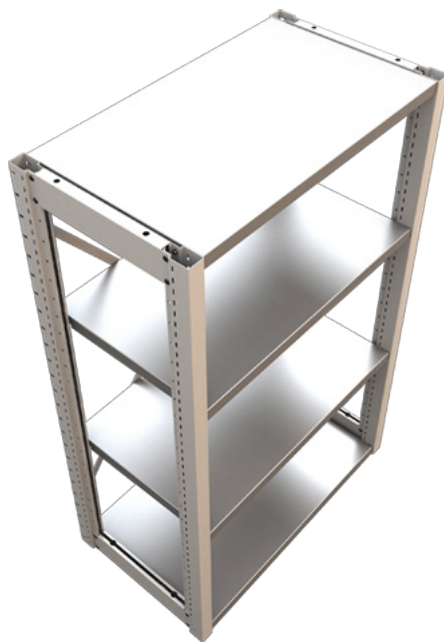
Perforated shelving uses the same Sysco® uprights and shelves as the closed version. Though the uprights have a circular perforation that makes ventilation within the system possible. A perforated shelving system has an open look and feel whilst maintaining the rigidity and loading capacity of a closed shelving system.





## Slotted shelving

Slotted shelving uses the same Sysco® uprights and shelves as the closed version. Though the uprights have rectangular cut-outs which make ventilation within the system possible and create a more open system. The slotted uprights are often used in libraries.



## Open shelving

Sysco® Open uprights create a completely open system, allowing optimum ventilation. The open system grants you to store items larger than the compartment size. Having an open system gives you a clear overview of the objects that are stored.

# Build to order

Do you need advice or want a tailor made design? Bruynzeel will help you to get the best possible solution for your storage challenge. With a dedicated account manager and our sales support team. Get in touch today without any further obligation.

Our systems are highly configurable, with various standard bay lengths and upright heights that can be configured in steps of 40 mm.

Need to build a solution around existing structural elements? You can!

All our steel products are 100% epoxy powder coated, preventing rust and corrosion. Using high quality materials our storage systems are all produced in our ISO certified factory in the Netherlands.





Download our technical datasheets  
[bruynzeel-storage.com/downloads](https://bruynzeel-storage.com/downloads)



## Accessories

We have multiple options, take a look at our accessories web page to find out more.



Find out more!

[bruynzeel-storage.com/accessories](https://bruynzeel-storage.com/accessories)

## Loading capacity

Our shelves have a standard capacity of 40 kilograms per linear meter, our bays can handle 800 kilograms. With reinforcement bars we can increase our capacity even more.

## Material

Made from high grade 100% powder coated steel, our products are durable and will last for years.

## Colour options

We have 13 standard colours, but we can deliver any RAL colour you might like.



Download our colour chart

[bruynzeel-storage.com/downloads](https://bruynzeel-storage.com/downloads)



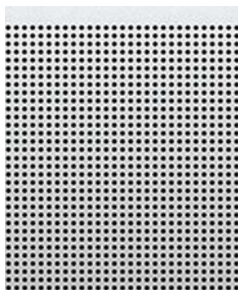
# The finish that suits your business

Your storage system can be the eye catcher of any room or subtly blend in with its stylish design. Simply choose the material of your preference from our extensive materials portfolio. We can inform you about the possibilities of our made-to-measure graphics, which will allow you to create a surface with the image of your choice, displaying your corporate logo or any other design to suit your specific environment.

Steel



Steel / Acoustic



Glass



Monoform



SHADE®  
by Jacob Jensen



Print



# Compare our Sysco<sup>®</sup> models

Which system is best for you? Scan the QR code with your phone and get an overview of the main differences between our systems. Our systems are very versatile and can be used in many different situations or applications. Whether you are looking for a storage solution for your archive, museum, library, office or anywhere else we have the solution for you.

What's your storage challenge?



Find out more!

[bruynzeel-storage.com/compare-sysco](https://bruynzeel-storage.com/compare-sysco)

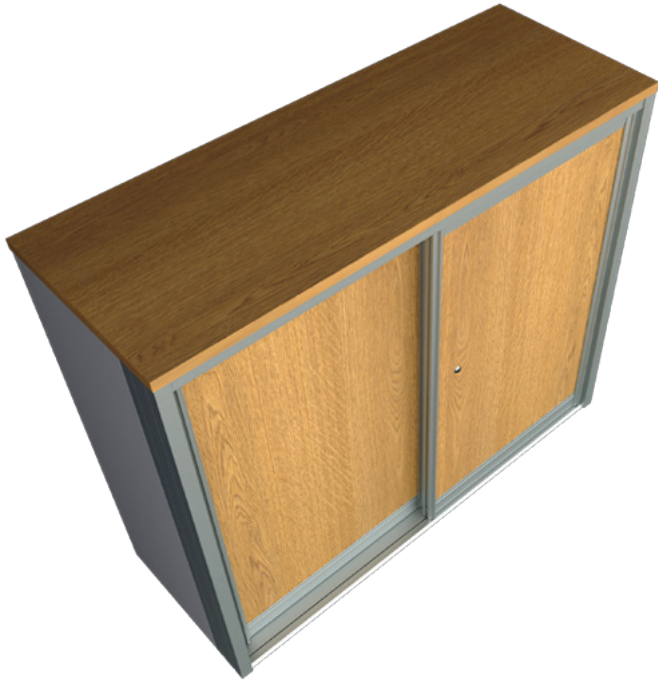






# Sysco<sup>®</sup> cabinets

Our Sysco<sup>®</sup> shelving can be fitted with cladding on all sides. Creating an open system with wooden cladding or creating a closed cabinet with various types of doors. Sysco<sup>®</sup> cabinets are highly customizable in dimension and colour. With a selection of doors, accessories and finishing Sysco<sup>®</sup> cabinets can be used for any purpose.



## Sliding doors

Creating a cabinet out of our Sysco® racks can be done using sliding doors. The doors are lockable and available in multiple wood designs.



## Roller front doors

Used to create a cabinet out of just one Sysco® rack. Besides a handle at the very bottom, the roller front doors are equipped with an integrated handle in the middle. This allows you to open the door from a standing position.





## Steel hinge doors

Hinge doors can be used to close a Sysco® rack entirely or can be used to close just a part of a Sysco® rack. Available in almost any RAL colour you can match the shelving system or be creative and create something unique. The cabinet with lockable steel hinge doors will be fixed to a wall to offer optimal safety.



## Steel hinge doors with glass panels

The steel hinge doors can be fitted with safety glass panels which gives you an opportunity to look inside the cabinet. The lockable steel hinge doors with glass panels give your cabinet a modern look and feel.



Take a look at our case studies  
[bruynzeel-storage.com/case-studies](https://bruynzeel-storage.com/case-studies)

# Sysco<sup>®</sup> Library

In our Sysco<sup>®</sup> product range we create a product specifically for libraries. With a high quality finish and specially designed accessories. Our Sysco<sup>®</sup> Library shelving systems uses a brace beam for strength. Traditionally shelving systems use cross bracing, but this would obstruct the view in a library. Bruynzeel is your partner for library shelving systems, for both static and mobile solutions.



# Today's Library

## More than just books

Today, both public and academic libraries are increasingly becoming vibrant. They are going beyond being places to merely access knowledge to become centres to truly explore and create. This stresses the demand for increased and improved services and hence the demand for more space.

It has never been more vital to ensure libraries offer an appropriate balance of flexible and special-use spaces to spur dialogue and engagement. Along with responding to changes dictated by technological advances, libraries must also offer appropriate spaces for meetings, presentations and casual collaboration. With a little help of Bruynzeel Storage Systems, libraries are easily able to create more space for all these kind of community needs by the aid of a new storage and display strategy.

We can eliminate or reduce your need for more space in public areas or your need for non-public archiving and/or extra building space and enhance internal workflow, efficiency and logistics.

# Why choose a four post system?

As a four post system, Bruynzeels Sysco® Library is much more affordable compared to cantilever systems. In most cases you can save up to 35% over equivalent cantilever. Beside that, a four post system has no central spine and thus no wasted space.

Bruynzeels Sysco® Library has a wide range of accessories and is available in several different finishes to complement any library's interior design.

# Mobile shelving

## Optimise space!

Mobile shelving is far more space-efficient than conventional static shelving.

Sometimes called a moving-aisle system, the single access aisle is 'created' wherever it is required by moving the mobile book-stacks aside, either individually or all at the same time. Our mobile systems can be equipped with extra wide aisles to allow wheelchair access, and additional innovative features such as Auto Air Circulation to preserve books and security options.

An increasing number of mobile units have been installed in the public areas of libraries, thanks to their enviable safety record and space-saving features.





Find out more!  
[bruynzeel-storage.com/archive](https://bruynzeel-storage.com/archive)



# Compactus® Series

Bruynzeel's Compactus® series is more than just a space-saving solution; the different systems are extremely easy to operate. Compactus® can be supplied with two different types of drive systems:



Compactus® Original: designed with convenience in mind.

Rotating the ergonomic operating handle provides swift and easy access to your collection. Select from an extensive range of finish options, from cost-effective chain box covers to eye-catching coloured glass.



## **Compactus® Dynamic II: optimum ease of use**

Thanks to the electronic control system, Compactus® Dynamic II units are easy to operate and effortless to move, even with your hands full.

If electronics make our daily lives a little easier, why settle for anything less at work?





# Choosing quality With a sustainable touch

Choosing Bruynzeel means quality is guaranteed. To make sure you get the best possible storage system our products comply with recognised international quality standards, awarded by independent experts in the field. The RAL certificates awarded for our products are your guarantee for performance and reliability.

Your storage solution is made in our factory in the Netherlands, according to ISO 9001 and ISO 14001. World-class manufacturing tools and methods implemented in our facilities allow us to produce your order with great precision in thousands of different configurations. We use mainly oil-free steel to minimise our impact on the environment by eliminating the need for detergents and cleaners. Our powder coating process guarantees a 100% coating with epoxy powder, so no corrosion can occur.

We would be delighted to assist you in achieving your sustainability goals by offering you durable products and space-saving concepts.



# Exceeding expectations in service

Every Bruynzeel Storage solution comes with top-notch technical support. We go the extra mile to make sure you get the most out of your Bruynzeel system.

## **Expert advice**

Get the rundown on all the dos and don'ts of your system from a Bruynzeel service engineer in training groups of up to eight users.

## **Key User training**

Make the most of your storage solution by designating a "Key User", trained and supported by Bruynzeel. If further assistance is needed the Key User can directly contact our service staff.

## **Service contracts**

For ultimate peace of mind we offer a range of service contracts, covering parts, labour and callout charges.

A Bruynzeel service contract guarantees your premium storage solution will receive the very best care from trained service engineers. Our star services are carried out by dedicated staff who take pride in the upkeep and maintenance of your system throughout its lifetime.

# The power of partnership

Finding efficient and sustainable storage solutions for your storage challenge requires careful consultation and is the key to designing a tailored solution that matches your needs.

Every Bruynzeel storage solution is unique and based on your specific requirements.

In close cooperation with you, we create the relevant storage solution for the proper care and management of your collection.

Because we have our own Research & Development department and an experienced team, we are able to adapt our products to your requirements and market trends.

Nothing is impossible. We can design a storage system for any need. Our staff are expert at providing customised storage solutions.



meeting point  
Multifunctional  
DROPDOWN  
WHITEBOARD  
We organis  
Dynamic archive  
Personal storage  
wardrobe  
safe  
storage  
SPACEFUL  
lockers  
Hot desking  
workspace  
Improve acoustics  
brainstorm place  
Coffee Corner



Contact us!  
[bruynzeel-storage.com/contact](http://bruynzeel-storage.com/contact)



# What's your Storage Challenge?

Industrieterrein 7  
5981 NK Panningen  
The Netherlands

Tel.: +31 (0) 77 306 90 00

Info@bruynzeel.org

[www.bruynzeel-storage.com](http://www.bruynzeel-storage.com)

The pictures in this brochure can show  
products that are not standard models.  
Products subject to change. SAC - 01.18